



Cabinet Office



HM Treasury



Evaluation  
Task Force

# Major Projects, Major Impact

## Examining evaluation in government

Emily Power and Fay Sadro  
Senior Evaluation Advisers, Evaluation Task Force

# What we'll cover

---

Why evaluate?

Evaluation and major government projects

What do we want to see?

**Why evaluate?**



# Major projects and evaluation

---

8%

A 2019 review showed only 8% of spending on government major projects had robust evaluation plans.

£678bn

The GMPP now represents £678 billion of government spending, around 50% more than at the time of the 2019 study.



National Audit Office

“...the use of evaluation continues to be variable and inconsistent...[so] **government cannot have confidence its spending in many policy areas is making a difference**”

# The Evaluation Task Force's aim is to put robust evaluation evidence at the heart of government decisions

---

Our work splits into three interconnected areas:

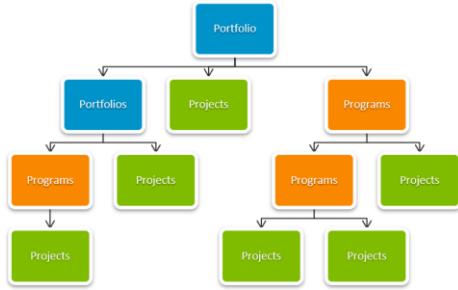


# Major projects and evaluation



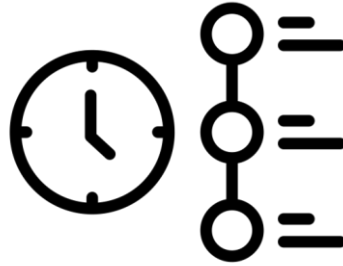
# Why aren't we evaluating robustly?

---



## Complexity

Multiple strands and variation of delivery



## Timelines

Long term projects with long term outcomes



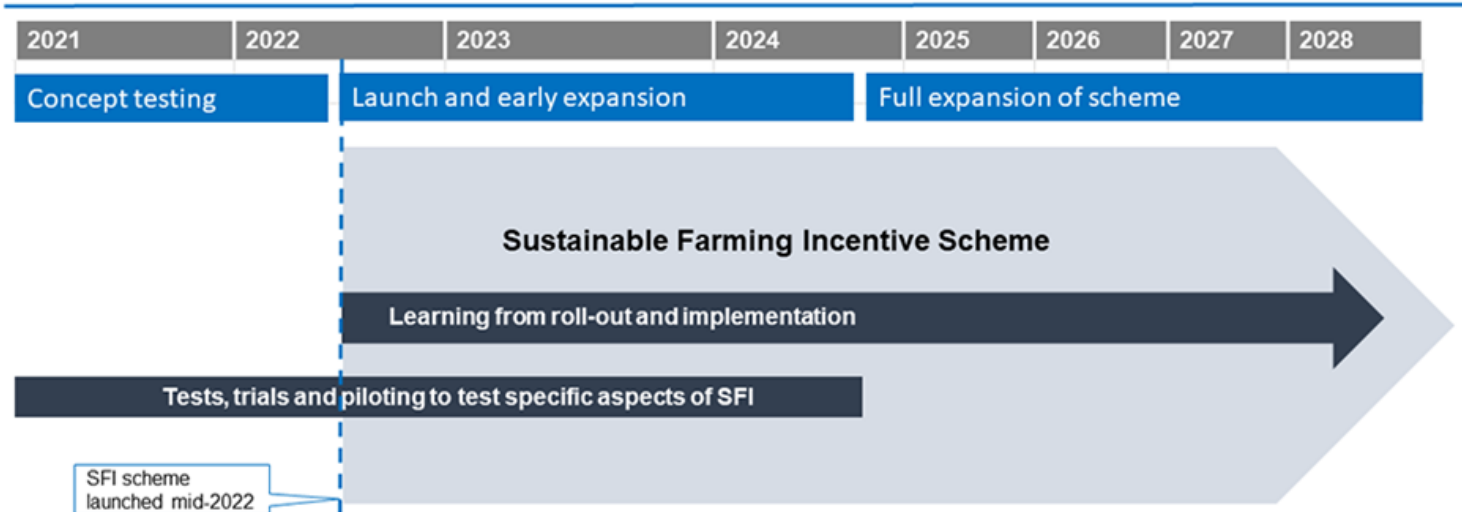
## Delivery focus

“Time and money is better spent on the front-line£”

# Complexity: Defra's Farming and Countryside Programme

**Test-and-learn approach:** start small and develop incrementally, so we get things right when we roll out

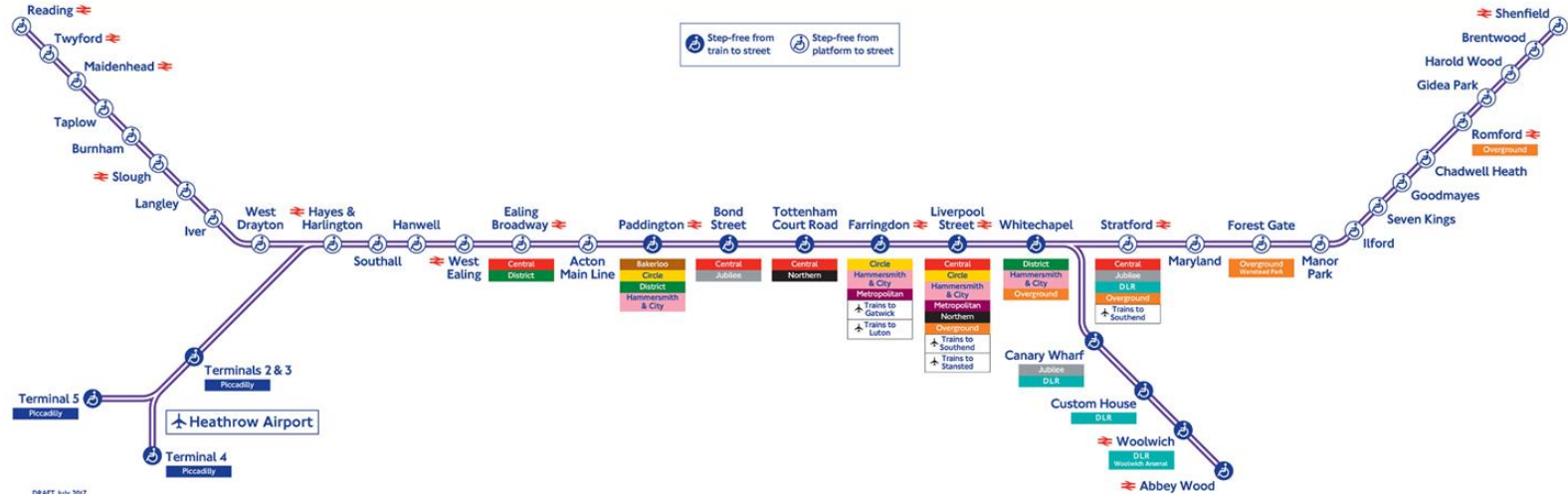
## Roll-out of the Sustainable Farming Incentive





# Timelines: DfT & TfL's Crossrail

## Elizabeth line



DRAFT July 2017

MAYOR OF LONDON



# Delivery focused: DWP's Health Transformation Programme

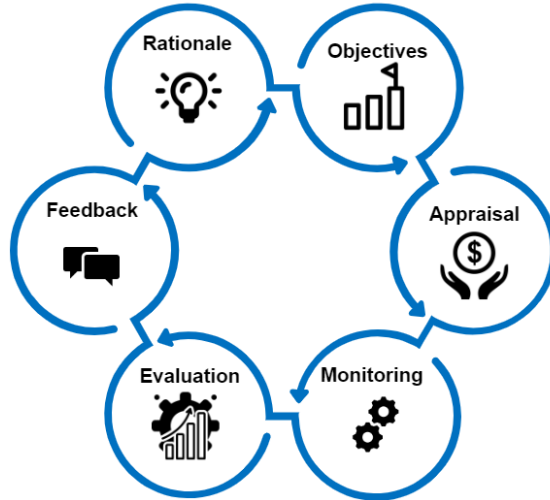
---



**What do we want  
to see?**




# 1. Useful evaluation – embedded in the policy cycle




ROAMEF Cycle

Evaluation should be used **before, during and after** implementation

- ✓ Designing policies with good evidence
- ✓ Building evaluation into implementation
- ✓ Sharing learnings afterwards

 **Learning:** what works? what doesn't?

 **Accountability:** is it value for money?

## 2. Robust evaluation – built into implementation



How will you **evidence the impacts** i.e. using a control group or counterfactual?

Can you **test/pilot** the policy before you begin delivering at scale?



Could you **test variations** to understand the most effective approach?

### 3. Transparent evaluation – maximising what is learned

---

““”

**“If you do evaluation openly and you're clear with people, it is a massive builder of trust”**  
*Sir Patrick Vallance*



**Published Evaluation Strategies from every government department**



**An evaluation registry for all government evaluations**

**Thank you, and please get in touch at**

**[etf@cabinetoffice.gov.uk](mailto:etf@cabinetoffice.gov.uk)**



Cabinet Office